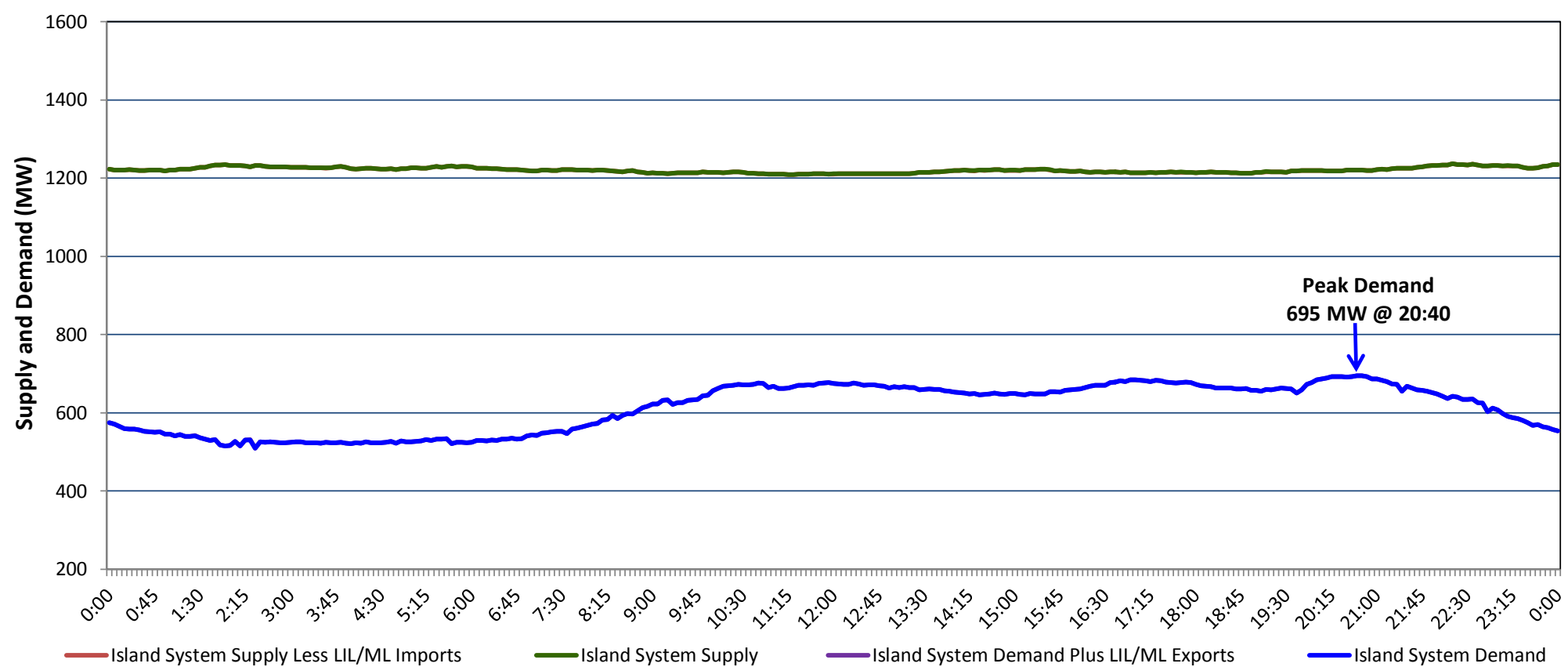


**Newfoundland Labrador Hydro (NLH)  
Supply and Demand Status Report Filed Tuesday, September 04, 2018**

**Section 1  
Island Interconnected System Supply, Demand & Exports  
Actual 24 Hour System Performance For Monday, September 03, 2018**



**Supply Notes For September 03, 2018**

- A As of 1438 hours, May 22, 2018, Holyrood Unit 2 unavailable due to planned outage 70 MW (170 MW).
- B As of 0801 hours, July 19, 2018, Holyrood Unit 3 removed from service for economic dispatch 110 MW (150 MW).
- C As of 1000 hours, July 27, 2018, Holyrood Unit 1 unavailable due to planned outage 88 MW (170 MW).
- D As of 0823 hours, August 06, 2018, Cat Arm unit 1 unavailable due to planned outage 50 MW (67 MW).
- E As of 1000 hours, August 06, 2018, Cat Arm unit 2 unavailable due to planned outage (67 MW).
- F As of 1609 hours, August 07, 2018, Stephenville Gas Turbine available at 25 MW (50 MW).
- G As of 1118 hours, August 21, 2018, Holyrood Gas Turbine unavailable due to planned outage (123.5 MW).
- H As of 1316 hours, August 31, 2018, Granite Canal Unit available at 37 MW (40 MW).

**Section 2  
Island Interconnected Supply and Demand**

Tue, Sep 04, 2018	Island System Outlook <sup>3</sup>	Seven-Day Forecast	Temperature (°C)		Island System Daily Peak Demand (MW)	
			Morning	Evening	Forecast	Adjusted <sup>7</sup>
Available Island System Supply: <sup>5</sup>	1,225 MW	Tuesday, September 04, 2018	17	18	770	770
NLH Island Generation: <sup>4</sup>	915 MW	Wednesday, September 05, 2018	14	14	800	800
NLH Island Power Purchases: <sup>6</sup>	125 MW	Thursday, September 06, 2018	15	17	820	820
Other Island Generation:	185 MW	Friday, September 07, 2018	13	13	820	820
ML/LIL Imports:	- MW	Saturday, September 08, 2018	11	11	825	825
Current St. John's Temperature & Windchill: 17 °C	N/A °C	Sunday, September 09, 2018	12	12	800	800
7-Day Island Peak Demand Forecast:	835 MW	Monday, September 10, 2018	11	12	835	835

**Supply Notes For September 04, 2018**

- Notes:
1. Generation outages for running and corrective maintenance are included. These are not unusual for power system operations. They generally do not impact customer supply. The power system operators schedule outages to system equipment whenever possible to coincide with periods when customer demands are low and sufficient supply reserves are available. However, from time to time equipment outages are necessary and reserves may be impacted.
  2. Due to the Island System having no synchronous connections to the larger North American grid, when there is a sudden loss of large generating units some customer's load must be interrupted for short periods to bring generation output equal to customer demand. This automatic action of power system protection, referred to as under frequency load shedding, is necessary to ensure the integrity and reliability of system equipment. Under frequency events typically occur 5 to 8 times per year on the Island Interconnected System and the resultant customer load interruptions are generally less than 30 minutes.
  3. As of 0800 Hours.
  4. Gross output including station service at Holyrood (24.5 MW) and improved NLH hydraulic output due to water levels (35 MW).
  5. Gross output from all Island sources (including Note 4).
  6. NLH Island Power Purchases include: CBPP Co-Gen, Nalcor Exploits, Rattle Brook, Star Lake, Wind Generation, Vale capacity assistance (when applicable).
  7. Adjusted for CBPP, Vale and Praxair interruptible load, Maritime Link and Labrador-Island Link exports and the impact of voltage reduction, when applicable.

**Section 3  
Island Peak Demand Information  
Previous Day Actual Peak and Current Day Forecast Peak**

Mon, Sep 03, 2018	Actual Island Peak Demand <sup>8</sup>	20:40	695 MW
Tue, Sep 04, 2018	Forecast Island Peak Demand		770 MW

Notes: 8. Island Demand / LIL / ML Exports (where applicable) is supplied by NLH generation and purchases, plus generation owned and operated by Newfoundland Power and Corner Brook Pulp & Paper (Deer Lake Power, DLP).